



香港浸會大學持續教育學院
SCHOOL OF CONTINUING EDUCATION
HONG KONG BAPTIST UNIVERSITY

多元選擇
首選
浸大



BACHELOR OF EDUCATION (HONS) IN EARLY CHILDHOOD EDUCATION

幼兒教育學教育學士 (榮譽) 學位課程

Full-time Mode | Autumn 2024 Intake



香港浸會大學持續教育學院 幼兒及基礎教育部

香港浸會大學持續教育學院一向重視基礎教育的師資培訓及發展。本院之幼兒及基礎教育部為本地幼兒及基礎教育工作者提供優質的專業培訓及持續進修課程。本院是首間獲政府認可舉辦幼兒教育學位課程之專上學院，並於1994年獲政府委任為在職小學教師提供教育學士學位課程。鑑於社會對幼兒教育師資培訓的需求日增，幼兒及基礎教育部現正致力提升幼兒教育工作者的專業水平。

本部為職前及在職幼師提供一系列全日制及兼讀制的課程，包括證書、高級文憑、學位及深造文憑，所有課程均著重提升本地學員的學歷及專業技能。隨著近年本部在基礎教育課程方面的拓展及屢獲政府委任開辦有關課程，本院進一步確立在幼兒教師培訓的領導地位。

課程宗旨

隨著3-3-4學制的落實，本部開辦四年全日制幼兒教育學教育學士(榮譽)學位課程，旨在為有志投身幼兒教育工作的中學畢業生提供培訓，讓學員能掌握最新的幼兒教育專業知識和技能。

為配合政府倡議提高幼兒教師之學歷，本課程之畢業生將獲培訓成為專業的幼兒教育工作者，具備有關的專業知識、終身學習的技能及對工作的投入感。學員亦能在瞬息萬變的環境中帶領幼兒學習和思考，在未來幼兒教育專業上扮演更重要和更主動的領導角色。

課程結構

本課程結構乃根據香港浸會大學四年制課程結構制定，學員共須修讀128個學分。

主修學科	
- 專業學科	18 學分
- 課程與教學	21 學分
- 實習	14 學分
- 專題研究	5 學分
選修學科	33 學分
專修學科	6 學分
大學核心課程	13 學分
通識教育課程	18 學分

總學分：128 學分



畢業要求及資歷認可

學術資格

學員成功修畢四年制課程，並符合畢業要求，將獲頒發「幼兒教育學教育學士(榮譽)學位」。

專業資格

課程畢業生將符合教育局對「幼兒教育證書[C(ECE)]資歷」的培訓要求，並符合教育局對幼稚園校長的其中一項註冊要求。此外，亦達社會福利署對「幼兒工作員」及「幼兒中心主管」的培訓要求。畢業學員如修畢指定專修學科，更可獲社會福利署認可之「特殊幼兒工作訓練課程」資歷。



學歷由浸大頒授

授課模式

為照顧不同學員的需要，鼓勵學員與導師間之互動，並透過同儕互動以刺激學員反思，本課程將以面授模式進行。

此外，本院亦為學員提供教學實習的機會，從而幫助學員綜合所學的知識及技能，應用於實際的幼教環境中。

授課語言

除個別科目外，本課程主要以英語授課。

實習科目將以粵語授課，以協助學員適應本地幼教機構的工作。

學生服務及設施

- 圖書館
- Moodle 網上學習系統
- 學生輔導
- 體育中心
- 醫療及牙科保健服務



入學資格

- 香港中學文憑考試中國語文及英國語文達第三級，數學 (必修部分) 達第二級，公民與社會發展獲「達標」，及兩科選修科目達第三級*；或
 - 經由持續教育學院評審的其他同等學歷
- * i. 其中一科選修科目必須為甲類科目，但不包括數學延伸部分 (單元一或單元二)。
ii. 數學延伸部分 (單元一或單元二) 及丙類科目 (須達 C 級或以上) 可作為第二科選修科目。
iii. 乙類科目 (須達「達標並表現優異」或以上) 可作為第二科選修科目 (但不包括應用學習中文；非華語學生可以應用學習中文的「達標」成績替代中國語文的資歷要求)。

申請者如持有認可之幼兒教育高級文憑，可申請入讀三年級。

學費

四年學費分八期繳交，每期港幣\$31,152*。

*學費若有所調整，將以本院之最新公佈為準。

學費資助

本課程之學員可向學生資助處申請「專上學生資助計劃」及「免入息審查貸款計劃」。

報名辦法

方法一：

2024年中學文憑試考生可經專上課程電子預先報名平台遞交申請 (<https://www.eapp.gov.hk>)。

方法二：

網上報名 - 非2024年中學文憑試考生可經 (<http://hkbusce.hk/appbedece>) 報名。

面試安排

面試將安排於2024年6月至7月期間分階段進行。

親身報名及即場面試將安排於7月進行，詳情請瀏覽課程網頁 hkbusce.hk/bedece。

重要日期

截止申請日期	詳情請瀏覽課程網頁
迎新活動日期	2024年8月下旬
開課日期	2024年9月2日 (一)

查詢

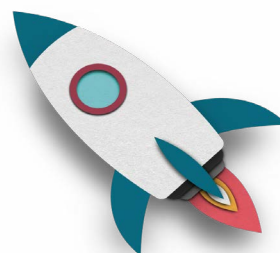
 3411 4300

 3411 4302

 hkbusce.hk/bedece

 bubedece@hkbu.edu.hk

以上資訊為 2023 年 12 月刊印時之最新版本，如有更改，恕不另行通知。最新資訊請瀏覽課程網頁。



The Early Childhood and Elementary Education Division, School of Continuing Education

The School of Continuing Education (SCE) has a vision for the development of professional training courses for local practitioners in basic education. The Early Childhood and Elementary Education Division (ECEED) is the academic arm of the School to foster the continuing professional development of quality teacher education programmes. The School was the first higher education institute to offer early childhood education programme at the degree level and was commissioned by the government to offer the Bachelor of Education (Honours) Programme to practicing primary teachers in 1994. In view of the expanding need for quality training services in early childhood education, the ECEED made a firm commitment to uplift the professionalism of early childhood education practitioners.

The ECEED offers a range of academic programmes on a full-time or part-time basis to provide pre-service and in-service training in basic education studies with qualifications awarded from certificate to postgraduate levels. All programmes are offered with a core emphasis on the advancement of academic qualifications as well as teaching skills for local early childhood and elementary education practitioners. With the continuous development of basic education programmes and the increasing number of government-commissioned courses operated in recent years, the ECEED has further affirmed its leading role and expertise in the provision and enhancement of early childhood and elementary education training in the community.

The Programme

Along with the implementation of the new “334” academic system, the four-year full-time Bachelor of Education (Honours) in Early Childhood Education programme aims to develop the professional knowledge and skills of secondary leavers who are interested to pursue a career in early childhood education and childcare services.

To align with the government’s initiative in upgrading the academic qualifications of early childhood education practitioners, graduates of the Programme will be trained to become self-reliant early childhood professionals equipped with in-depth knowledge, lifelong learning skills, and commitment to their profession, with the ability to facilitate learning in a constantly changing world and to promote high quality and innovative education and care for young children in the local early childhood education settings.

Programme Structure

The Programme is structured according to the Hong Kong Baptist University overall structure of the four-year curriculum. It consists of 128 units.

Major Required Courses

- Professional Studies	18 units
- Curriculum Studies	21 units
- Practicum	14 units
- Honours Project	5 units

Electives Courses

33 units

Specialised Courses

6 units

University Core

13 units

General Education Programme

18 units

Total: 128 units



Award and Recognition

Academic Recognition

Students who have successfully completed the four-year Programme and fulfilled all graduation requirements will be awarded the Bachelor of Education (Honours) in Early Childhood Education by the Hong Kong Baptist University.



**Qualification Awarded
by HKBU**

Professional Recognition

Graduates of the Programme are recognised by the Education Bureau (EDB) for the Certificate in Early Childhood Education [C(ECE)] qualification, and as meeting one of the requirements for registration as kindergarten principals. In addition, they are recognised by the Social Welfare Department (SWD) for registration as Child Care Workers (CCW) and Child Care Supervisors (CCS). Graduates who have successfully completed the stipulated specialised courses will be recognised by the Social Welfare Department as having covered the training areas of the One-year In-service Course in Special Child Care Work (SCCW) for special child care workers.

Mode of Study

Face-to-face mode will mainly be adopted to cater for the needs of the students and to encourage interaction between lecturers and students. The process of re-thinking teaching beliefs and behaviour will further be facilitated through peer interaction as well as stimuli afforded by the classroom environment, including pedagogical materials and teaching strategies such as scaffolding and guided questions that provoke critical thinking and intellectual discussions in various kindergarten classroom contexts.

In addition, practical sessions will be provided for students to apply the theoretical concepts acquired.

Medium of Instruction

The medium of instruction for formal classroom teaching is English, except for those courses that are granted exemption.

All practicum courses will be conducted in Cantonese in order to prepare students for working in local early childhood education settings.

Campus Facilities and Learning Support for Students

- Libraries
- Recreation facilities
- Online course management system (Moodle)
- Medical and dental services
- Counselling support

Admission Requirements

- **HKDSE Level 3 in Chinese Language and English Language, Level 2 in Mathematics Compulsory Part, “Attained” in Citizenship and Social Development, and Level 3 in two elective subjects*;** or
- **Other equivalent qualifications to be assessed by the School**

** i. One of the elective subjects must be a Category A subject excluding Extended Part of Mathematics (Module 1 or Module 2).*

ii. Extended Part of Mathematics (Module 1 or Module 2) and Category C subjects at Grade C or above can be recognised for fulfilment of the second elective requirement.

iii. Category B subjects with “Attained with Distinction (I)” or above can be used for fulfilment of the second elective requirement (excluding the subjects under the study area of “Applied Learning Chinese” which are recognised as an alternative Chinese Language qualification for non-Chinese speaking students).

Applicants with a recognised Higher Diploma in Early Childhood Education may apply for admission to Year 3 of the Programme.

Tuition Fee

The tuition fee of the four-year programme will be paid by 8 instalments with HK\$31,152 each*.

**The tuition fee is subject to revision.*

Financial Assistance

Students can apply for Financial Assistance Scheme for Post-secondary Students (FASP) and Non-means-tested Loan Scheme for Post-secondary Students (NLSPS) from the Student Finance Office (SFO) of the Working Family and Student Financial Assistance Agency.



Application Procedures

Method 1:

2024 HKDSE candidates can apply for admission through E-APP (<https://www.eapp.gov.hk>).

Method 2:

Online application will be available for non-2024 HKDSE candidates (<http://hkbusce.hk/appbedece>).

Interviews

Shortlisted candidates will be invited to attend an interview from June to July 2024.


In-person application with on-site interviews will be arranged in July 2024. Please refer to our programme website at hkbusce.hk/bedece for details.

Important Dates

Application Deadline	Please visit our programme website for details.
Student Orientation	Late August 2024
Course Commencement	2 September 2024 (Mon)

Enquiry

 3411 4300

 3411 4302

 hkbusce.hk/bedece

 bubedece@hkbu.edu.hk

Information stated in this leaflet is updated as of December 2023 and is subject to change without prior notice. Please refer to our website for the latest information.

