



香港浸會大學持續教育學院
SCHOOL OF CONTINUING EDUCATION
HONG KONG BAPTIST UNIVERSITY

50 傳知授業
跨越金禧
Inspiring Generations

香港浸會大學
HONG KONG
BAPTIST
UNIVERSITY

FULL-TIME SELF-FUNDED PROGRAMMES 2025/26

全日制自資課程





MADAM CHAN
WU WAN KWAI
SCHOOL OF
CONTINUING
EDUCATION
TOWER

陳瑞槐夫人胡尹桂女士
持續教育大樓

賽馬會師生活動中心

JOCKEY CLUB ACADEMY



SCHOOL OF CONTINUING EDUCATION



Established in 1975, the School of Continuing Education (SCE) of Hong Kong Baptist University (HKBU) offers a wide range of full-time and part-time programmes with multi-faceted teaching approaches incorporated through its College of International Education (CIE), Continuing and Professional Education Division (CPED), Early Childhood and Elementary Education Division (ECEED) as well as Division of Nursing Education (DNE) to meet the needs and challenges of the rapidly changing society. A robust quality assurance system aligned with the University's quality assurance requirements is adopted to ensure that high standards are achieved and learners' needs are satisfied. In 2018, the sub-degree programmes offered by the School were held in high regard by the Quality Assurance Council of the University Grants Committee in the aspects of teaching and learning, student development and support facilities.

CIE: Offers the 2-year Associate Degree, Higher Diploma and Undergraduate Programmes at the HKBU Shek Mun (Shatin) campus. The College places great emphasis on providing different articulation opportunities for Associate Degree and Higher Diploma students. Students can take the "2+2" pathway and earn an honours degree in four years.

CPED: Offers the 2-year Higher Diploma programmes, as well as the 1-year Diploma of College Foundation Studies and Diploma of Applied Education. It also provides the Applied Learning Courses for senior secondary school students.

ECEED: Offers the 2-year Higher Diploma in Early Childhood Education and the 4-year Bachelor of Education (Honours) in Early Childhood Education for HKDSE graduates, and the Postgraduate Diploma in Early Childhood Education for degree holders.

DNE: Offers the 5-year Bachelor of Nursing (Honours) for HKDSE graduates, equipping students with the necessary knowledge, skills and attitudes to serve in a wide range of healthcare settings. The Division will also deliver nursing specialty courses to prepare nurses at advanced practice level.

持續教育學院

香港浸會大學持續教育學院成立於1975年，轄下的國際學院、持續及專業教育部、幼兒及基礎教育部和護理教育部提供不同學科的全日制及兼讀制課程。為配合科技和社會迅速發展下各方面的人材培訓，課程融入多元教學，內容依據浸大學術要求訂定，課程質量受浸大監管和認可。本院的副學位課程於2018年獲大學教育資助委員會轄下的質素保證局正面肯定，在教與學、學生發展以至支援設施各方面均達滿意水平。

國際學院：於浸大石門(沙田)校園提供兩年制副學士、高級文憑及學士學位課程。學院為副學士及高級文憑同學提供多元升學出路，讓同學可以循「2+2」升學模式，以四年時間取得榮譽學士學位。

持續及專業教育部：提供兩年制高級文憑課程，以及一年制大專基礎教育文憑與應用教育文憑，亦有開辦為高中生而設的應用學習課程。

幼兒及基礎教育部：為香港中學文憑試畢業生提供兩年制幼兒教育高級文憑及四年制幼兒教育學教育學士(榮譽)學位課程，另開辦適合持有學士學歷人士修讀的幼兒教育深造文憑。

護理教育部：為香港中學文憑試畢業生提供五年制護理學學士(榮譽)學位課程，傳授必需的專業護理知識、技能及態度，以裝備學員在不同的醫療環境中服務社群；並將提供護理專科課程，以培育高級實踐水平的護士。



WHY SCE

為何選擇
持續教育學院



Long history and wide recognition for offering
post-secondary programmes

開辦專上教育課程歷史悠久，廣獲社會認受

Strong affiliation with HKBU and stringent quality assurance

學院隸屬浸大，質素保證嚴謹

Conferment of sub-degrees and degrees by HKBU or
collaborating universities

副學位及學位課程由浸大或協作大學頒授

Seamless articulation pathways

無縫升學銜接

Vibrant and diverse learning and extracurricular experience

豐富多元的學習及課外體驗

Comprehensive facilities and learning support

完善設施和學習支援

Extensive alumni and industry networks

廣闊的校友及業界網絡

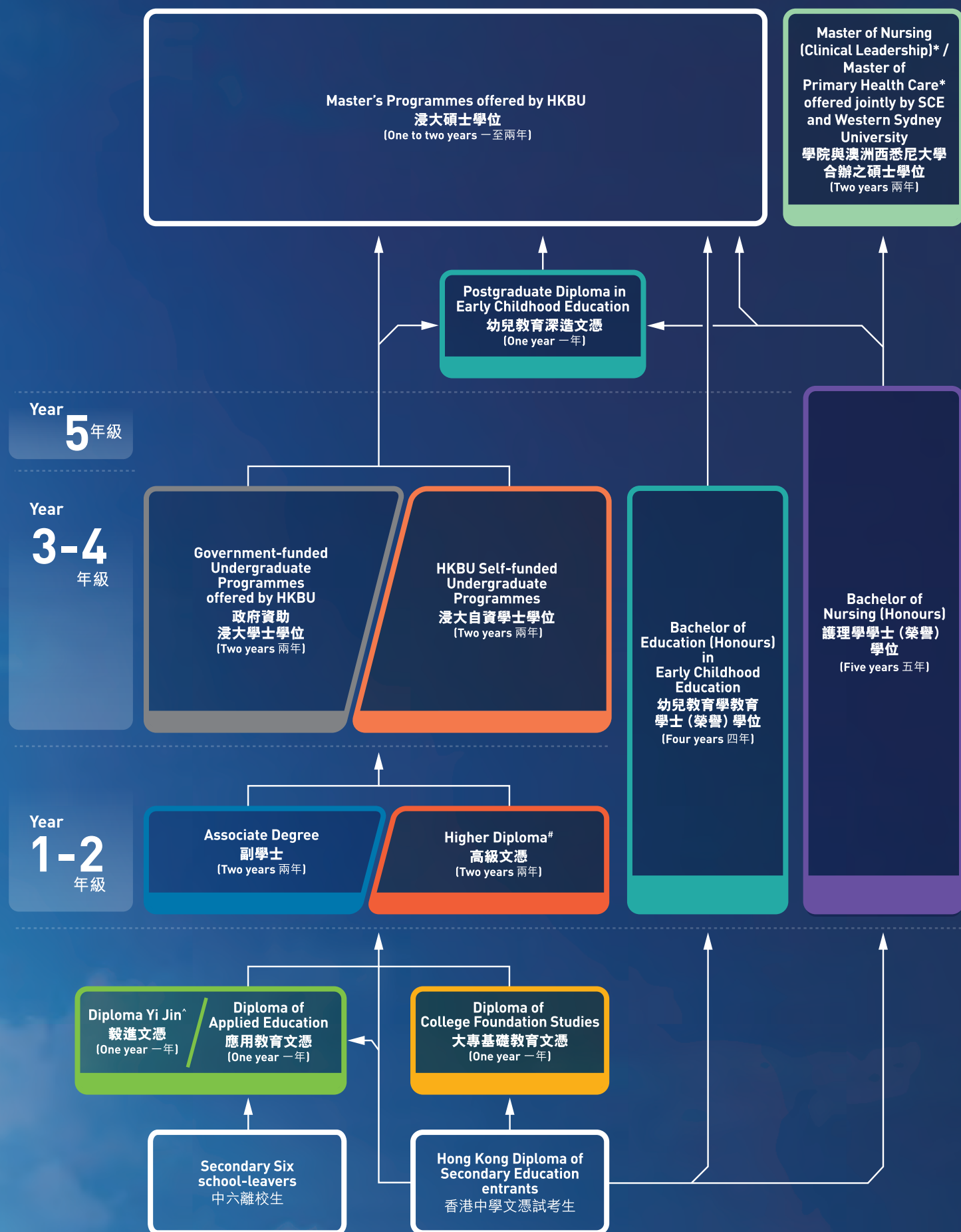
Ample scholarship and financial aid opportunities

多項獎助學金

HKBU Full-time Programme Study Paths

浸大全日制課程
進修階梯





* Part-time 兼讀制 Relevant work experience is required. 須具備相關工作經驗。

[#] Graduates of Higher Diploma in Early Childhood Education are eligible to apply for admission to Year 3 of Bachelor of Education (Honours) in Early Childhood Education. 幼兒教育高級文憑畢業學員可申請入讀幼兒教育學教育學士 (榮譽) 學位課程三年級。

[^] Diploma Yi Jin has not been offered since Academic Year 2023/24. 毅進文憑自2023/24學年起不再開辦。

Please refer to respective programme webpages for detailed admission requirements. 入學資格詳情請參閱有關課程網頁。

The School reserves the right to cancel any programme, make alterations to programme title and/or content or change the programme offering venue if circumstances warrant. 本院可因應情況取消任何課程、修改課程名稱、內容或更改課程的上課地點。

Bachelor of Education (Honours) in Early Childhood Education

幼兒教育學教育學士(榮譽)學位課程

Professional Recognition 資歷認可

Graduates are recognised by the Education Bureau as meeting the requirement for kindergarten teacher registration, and meeting one of the requirements for registration as kindergarten principals. In addition, they are recognised by the Social Welfare Department for registration as Child Care Workers (CCW) and Child Care Supervisors (CCS). Students who have successfully completed the stipulated specialised courses will be recognised by the Social Welfare Department as having covered the training areas of the One Year In-service Course in Special Child Care Work (SCCW) for special child care workers.

畢業生符合教育局對幼稚園教師的培訓要求，並符合教育局對幼稚園校長的其中一項註冊要求。此外，其資歷亦達社會福利署對「幼兒工作員」及「幼兒中心主管」的培訓要求。學員如修畢指定專修學科，更可獲社會福利署認可之「特殊幼兒工作訓練課程」資歷。



Duration 修讀年期

Four Years 4年

Enquiries 查詢電話

3411 4300

Webpage 網頁

hkbusce.hk/bedece



Email 電郵

bubedece@hkbu.edu.hk

Admission Requirements 入學資格

- HKDSE Level 3 in Chinese Language and English Language, Level 2 in Mathematics Compulsory Part, "Attained" in Citizenship and Social Development, and Level 3 in two elective subjects*; or
- Other equivalent qualifications to be assessed by the School[#]

- * i. One of the elective subjects must be a Category A subject excluding Extended Part of Mathematics (Module 1 or Module 2).
- ii. Extended Part of Mathematics (Module 1 or Module 2) and Category C subjects at Grade C or above can be recognised for fulfilment of the second elective requirement.
- iii. Category B subjects with "Attained with Distinction (I)" or above can be recognised for fulfilment of the second elective requirement (excluding the subjects under the study area of "Applied Learning Chinese" which are recognised as an alternative Chinese Language qualification for non-Chinese speaking students).

[#] Applicants with a recognised Higher Diploma in Early Childhood Education may apply for admission to Year 3 of the Programme.

- 香港中學文憑考試中國語文及英國語文達第三級，數學（必修部分）達第二級，公民與社會發展獲「達標」，及兩科選修科目達第三級*；或
- 經由持續教育學院評審的其他同等學歷[#]

- * i. 其中一科選修科目必須為甲類科目，但不包括數學延伸部分（單元一或單元二）。
- ii. 數學延伸部分（單元一或單元二）及丙類科目（須達C級或以上）可作為第二科選修科目。
- iii. 乙類科目（須達「達標並表現優異I」或以上）可作為第二科選修科目（但不包括應用學習中文；非華語學生可以應用學習中文的「達標」成績替代中國語文的資歷要求）。

[#] 申請者如持有認可之幼兒教育高級文憑，可申請入讀三年級。

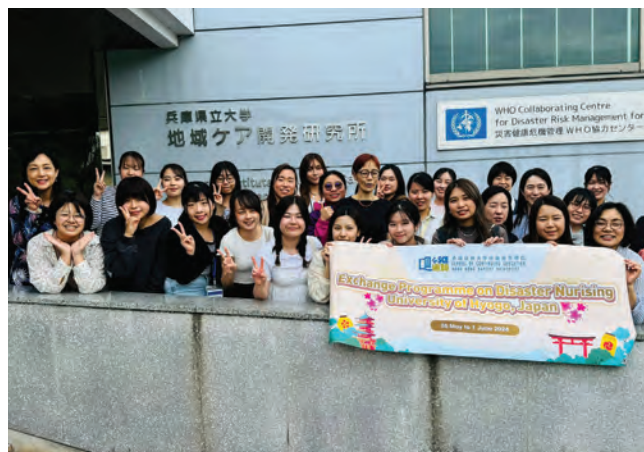
Bachelor of Nursing (Honours)

護理學學士(榮譽)學位課程

Professional Recognition 資歷認可

Graduates are eligible for registration as Registered Nurses (General) with the Nursing Council of Hong Kong upon successful completion of the Programme, which is accredited by the Council.

課程獲香港護士管理局認證，畢業生符合資格申請成為註冊護士（普通科）。



Duration 修讀年期
Five Years 5年

Enquiries 查詢電話
3411 5426

Webpage 網頁
hkbusce.hk/dnebn



Email 電郵
hkbudne@hkbu.edu.hk

Admission Requirements 入學資格

- HKDSE Level 3 in Chinese Language and English Language, Level 2 in Mathematics Compulsory Part, "Attained" in Citizenship and Social Development, and Level 3 in two elective subjects*; or
- Other equivalent qualifications to be assessed by the School
 - * i. One of the elective subjects must be a Category A subject excluding Extended Part of Mathematics (Module 1 or Module 2). The preferred Category A subjects are Biology and Science: Combined Science.
 - ii. Extended Part of Mathematics (Module 1 or Module 2) and Category C subjects at Grade C or above can be recognised for fulfillment of the second elective requirement.
 - iii. Category B subjects (either Health Care Practice or Foundation in Chinese Medicine) with "Attained with Distinction [I]" or above can be recognised for fulfillment of the second elective requirement.
- 香港中學文憑考試中國語文及英國語文達第三級，數學（必修部分）達第二級，公民與社會發展獲「達標」，及兩科選修科目達第三級*；或
- 經由持續教育學院評審的其他同等學歷
 - * i. 其中一科選修科目必須為甲類科目，但不包括數學延伸部分（單元一或單元二）。獲優先考慮的甲類選修科目包括生物及科學：組合科學。
 - ii. 數學延伸部分（單元一或單元二）及丙類科目（須達C級或以上）可作為第二科選修科目。
 - iii. 乙類科目（健康護理實務或中醫藥學基礎）（須達「達標並表現優異I」或以上）可作為第二科選修科目。

HKBU Self-funded Undergraduate Programmes

浸大自資學士學位課程



Division of Applied Science 應用科學學部

1. Bachelor of Social Sciences (Honours) in Environment and Resources Management
環境及資源管理社會科學學士 (榮譽)

Division of Arts and Languages 人文及語言學部

2. Bachelor of Arts (Honours) in Cultural Studies and Creative Industries
文化研究及創意產業文學士 (榮譽)

Division of Business 商學部

3. Bachelor of Commerce (Honours) in Human Resources Management 人力資源管理學商學士 (榮譽)
4. Bachelor of Commerce (Honours) in Marketing 市場學商學士 (榮譽)

Division of Communication 傳理學部

5. Bachelor of Arts (Honours) in Creative Writing for Film, Television and New Media
新媒體及影視創意寫作文學士 (榮譽)
6. Bachelor of Social Sciences (Honours) in Integrated Communication Management
綜合傳播管理學社會科學學士 (榮譽)
7. Bachelor of Social Sciences (Honours) in Media and Social Communication
媒體及社會傳播社會科學學士 (榮譽)

Division of Social Sciences 社會科學學部

8. Bachelor of Social Sciences (Honours) in Psychology 心理學社會科學學士 (榮譽)
9. Bachelor of Social Sciences (Honours) in Social Policy 社會政策社會科學學士 (榮譽)
10. Bachelor of Social Sciences (Honours) in Sport and Recreation Leadership
運動及康樂領袖學社會科學學士 (榮譽)

Duration 修讀年期

Two Years 2年

Admission Requirements 入學資格

An Associate Degree / Higher Diploma from recognised institutions; or other equivalent qualifications (please refer to the programme webpage for details)

持有認可院校頒授之副學士學位 / 高級文憑 ; 或同等學歷 (詳情請參閱課程網頁)

Enquiries 查詢電話

3411 3044

Webpage 網頁

cie.hkbu.edu.hk/t/ug

Email 電郵

spadmit@hkbu.edu.hk



Degrees awarded by HKBU
學位由浸大頒授



Associate Degree Programme

副學士課程



Concentration Studies 專修

Division of Applied Science 應用科學學部

1. Environmental Conservation Studies 環境保育學
2. Financial Technology 金融科技
3. Geography and Resources Management 地理及資源管理
4. Health Sciences 健康科學
5. Life Science 生命科學
6. Nutrition and Food Management 營養與食物管理

Division of Arts and Languages 人文及語言學部

7. Chinese for Professional Purposes 專業中文
8. Cultural Studies 文化研究
9. Music Studies 音樂學
10. Professional Communication and English Studies 專業傳意及英語研究
11. Visual Arts 視覺藝術

Division of Business 商學部

12. Business Administration 工商管理
13. Financial Management 財務管理
14. Marketing 市場學

Division of Communication 傳理學部

15. Creative Communication 傳理學
16. Creative Digital Media Design 創意數碼媒體設計
17. Film, Television and Digital Media Studies 電影、電視及數碼媒體學
18. Media Communication 媒體傳播

Division of Social Sciences 社會科學學部

19. Applied Social Service 應用社會服務
20. History and Hong Kong Studies 歷史及香港研究
21. Practical Philosophy 實踐哲學
22. Psychology 心理學
23. Society and Wellness Studies 社會與健康研究
24. Sociology and Digital Society 社會學與數碼社會
25. Sport and Recreation Studies 運動及康樂學

Duration 修讀年期

Two Years 2年

Enquiries 查詢電話

3411 3240

Webpage 網頁

cie.hkbu.edu.hk/t/admissions



Email 電郵

applycie@hkbu.edu.hk

Admission Requirements 入學資格

- Level 2 in five HKDSE subjects* (including Chinese Language* and English Language); or
- Satisfactory completion of the Diploma Yi Jin, Foundation Diploma, Diploma of General Studies, Diploma of Applied Education; or
- International qualifications, including but not limited to IB, GCE-AL and SAT, to be considered by the College; or
- Other equivalent qualifications to be considered and assessed by the College on a case-by-case basis; or
- Aged 21+ with acceptable qualifications to justify admission

* If one of the five HKDSE subjects is Citizenship and Social Development, the minimum entrance requirement would be "Attained" in this subject and Level 2 in four other HKDSE subjects (including Chinese Language* and English Language). Level 2 in Extended Part of Mathematics (Module 1 or Module 2) is recognised as one of the five HKDSE subjects. Applicants can use Applied Learning subjects for admission purposes.

* "Attained" or above in Applied Learning Chinese (for non-Chinese speaking students) would be accepted as an alternative Chinese Language qualification.

- 香港中學文憑考試五科*（包括中國語文*及英國語文）達第二級；或
- 完成毅進文憑、基礎課程文憑、基礎教育文憑、應用教育文憑；或
- 經由國際學院考慮的國際學歷，包括但不限於IB、GCE-AL、SAT；或
- 經由國際學院個別考慮及評核的其他同等學歷；或
- 年滿21歲並持相關入學資格人士

* 如其中一科為公民與社會發展，則最低入學要求為在該科取得「達標」，以及在其他四科（包括中國語文*和英國語文）達第二級。數學延伸部分（單元一或單元二）如達第二級可獲接納為該五科之一。申請人可以應用學習科目的成績作申請之用。

* 應用學習中文（非華語學生適用）的「達標」或以上成績，可符合中國語文的資歷要求。

Higher Diploma Programmes

高級文憑課程



1. Higher Diploma in Art Tech Design
2. Higher Diploma in Commercial Design (Jewellery Design and Visual Merchandising)
3. Higher Diploma in Data Science[^]
4. Higher Diploma in Management (Aviation Administration)
5. Higher Diploma in Management (Justice Administration and Law Enforcement)
6. Higher Diploma in Management (Sport and Healthy Living)
7. Higher Diploma in Early Childhood Education

藝術科技設計高級文憑

商業設計高級文憑 (珠寶設計及商品展示)

數據科學高級文憑[^]

管理學高級文憑 (航空行政管理)

管理學高級文憑 (司法行政與執法)

管理學高級文憑 (運動與健康生活)

幼兒教育高級文憑

Duration 修讀年期

Two Years 2年

Programme 課程 1

Enquiries 查詢電話

3411 3240

Email 電郵

applycie@hkbu.edu.hk

Programmes 課程 2-6

Enquiries 查詢電話

3411 5452

Email 電郵

hdiploma@hkbu.edu.hk

Programme 課程 7

Enquiries 查詢電話

3411 4333

Email 電郵

buhdece@hkbu.edu.hk

Webpage 網頁

hkbusce.hk/ftthd



Admission Requirements 入學資格

- Level 2 in five HKDSE subjects* (including Chinese Language* and English Language); or
- Relevant and substantial work experience and/or prior qualification(s) obtained in or outside Hong Kong with demonstrated ability to undertake sub-degree education; or
- Successful completion of the Diploma of Applied Education or equivalent; or
- Other equivalent qualifications to be assessed by the School / College; or
- Aged 21+ with acceptable qualifications to justify admission

[^] Applicants may be required to attend an interview and/or numeracy test.

* If one of the five HKDSE subjects is Citizenship and Social Development, the minimum entrance requirement would be "Attained" in this subject and Level 2 in four other HKDSE subjects (including Chinese Language* and English Language). Level 2 in Extended Part of Mathematics (Module 1 or Module 2) is recognised as one of the five HKDSE subjects. Applicants can use Applied Learning subjects for admission purposes.

* "Attained" or above in Applied Learning Chinese (for non-Chinese speaking students) would be accepted as an alternative Chinese Language qualification.

- 香港中學文憑考試五科* (包括中國語文*及英國語文) 達第二級；或
- 在本港或境外取得豐富的相關工作經驗及 / 或資歷，並證明有能力接受副學位教育；或
- 完成應用教育文憑或同等學歷；或
- 經由持續教育學院 / 國際學院評審的其他同等學歷；或
- 年滿21歲並持相關入學資格人士

[^] 申請人或須參加面試及 / 或數理能力測試。

* 如其中一科為公民與社會發展，則最低入學要求為在該科取得「達標」，以及在其他四科 (包括中國語文*和英國語文) 達第二級。數學延伸部分 (單元一或單元二) 如達第二級可獲接納為該五科之一。申請人可以應用學習科目的成績作申請之用。

* 應用學習中文 (非華語學生適用) 的「達標」或以上成績，可符合中國語文的資歷要求。

Diploma of College Foundation Studies

大專基礎教育文憑課程



Duration 修讀年期

One Year 1年

Enquiries 查詢電話

3411 5428

Webpage 網頁

hkbusce.hk/dcfs



Email 電郵

scedcfs@hkbu.edu.hk

Admission Requirements 入學資格

- Level 2 in HKDSE English Language and Chinese Language*; or
- Level 1 in HKDSE English Language and Chinese Language AND at least 6 points in the best five subjects*#*; or
- Other equivalent qualifications to be assessed by the School

* "Attained" or above in Applied Learning Chinese (for non-Chinese speaking students) would be accepted as an alternative Chinese Language qualification.

* Application will be considered for admission in the following circumstances:

- i) An applicant has obtained "Attained" in Citizenship and Social Development and at least 4 points in four other subjects; or
- ii) An applicant has attempted less than five subjects but obtained 6 points.

Applicants can use not more than two Applied Learning subjects for admission purposes.

- 香港中學文憑考試英國語文及中國語文達第二級+；或
- 香港中學文憑考試英國語文及中國語文達第一級及最佳五科成績最少達六分*#*；或
- 經由持續教育學院評審的其他同等學歷

+ 應用學習中文（非華語學生適用）的「達標」或以上成績，可符合中國語文的資歷要求。

* 申請人在下列情況下，其申請亦會被考慮：

- i) 申請人於公民與社會發展獲得「達標」，而其他四科的成績最少達四分。
- ii) 申請人報考少於五科，但成績達六分。

申請人可提交最多兩個應用學習科目的成績。



Diploma of Applied Education

應用教育文憑課程



Core Courses 必修科目

中國語文

英國語文

數學

Supplementary Courses 補充科目

生涯規劃
數碼公民

延伸數學

人際傳意與個人發展

Elective Clusters 選修群組

運動教練

- 運動教練學

商業管理

- 商業管理學
- 市場營銷學
- 銀行及金融學

- 網店行銷及營運
- 食品安全管理
- 航空服務

創意引發

- 傳媒學
- 微電影創作
- 表演與故事創作
- 商業攝影及數碼短片製作

- 電腦學
- 室內設計
- 時尚珠寶首飾設計

紀律部隊

- 警務
- 消防服務

- 入境事務

服務社群

- 健康護理
- 社會服務

- Applied Psychology*

* Medium of instruction: Cantonese supplemented with English
Teaching materials and assessment: English

教學語言：廣東話輔以英語
教材及評核：英語

Duration 修讀年期

One Year 1年

Admission Requirements 入學資格

Secondary 6 school-leavers or adults aged 21+
中六離校生或年滿21歲的人士

Enquiries 查詢電話

3411 4391

Webpage 網頁

hkbusce.hk/dae

Email 電郵

scedae@hkbu.edu.hk



Diploma awarded by SCE
文憑由持續教育學院頒授

Scholarships & Financial Aid

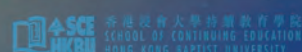
獎學金及學生資助

SCE is offering various types of scholarships and financial assistance to encourage students to excel in their studies and develop their talents. In Academic Year 2023/24, a total of HK\$8.87 million was offered to 762 students studying Undergraduate, Associate Degree, Higher Diploma, Diploma of College Foundation Studies and Diploma of Applied Education programmes by SCE and the HKSAR Government.

學院一直致力鼓勵同學爭取更佳成績、發展才能，設有多項獎學金及學生資助。於2023/24學年，學院及香港特區政府共頒發港幣887萬元的獎助學金予762名學士、副學士、高級文憑、基礎文憑和應用教育文憑同學。



獎學金及獎項頒獎禮 2024
Scholarship and Award Presentation Ceremony



獎學金及獎項頒獎禮 2024
Scholarship and Award Presentation Ceremony

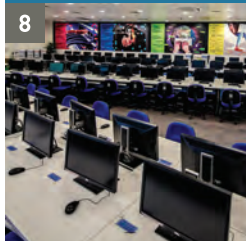
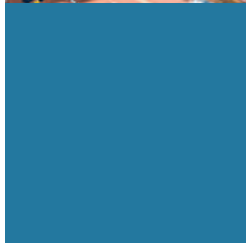
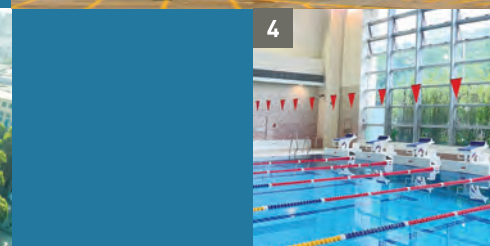


Campuses & Facilities

校園設施

SCE's campuses in Kowloon Tong and Shek Mun (Shatin) are well-equipped with dedicated teaching and learning facilities and extensive campus amenities.

學院位於九龍塘和石門(沙田)的校園，為學生提供舒適的學習環境和完善的校園設施。



1. Shaw Tower (Kowloon Tong Campus)
2. Madam Chan Wu Wan Kwai School of Continuing Education Tower (Kowloon Tong Campus)
3. Joint Sports Centre (Kowloon Tong Campus)
4. Indoor Heated Swimming Pool (Shek Mun Campus)
5. College of International Education (Shek Mun Campus)
6. Nursing Laboratories (Kowloon Tong Campus)
7. Library (Shek Mun Campus)
8. Learning Commons (Shek Mun Campus)
9. MI-Lab & Comm:aLive Studio (Shek Mun Campus)

1. 逸夫行政樓 (九龍塘校園)
2. 陳瑞槐夫人胡尹桂女士持續教育大樓 (九龍塘校園)
3. 聯校運動中心 (九龍塘校園)
4. 室內恆溫游泳池 (石門校園)
5. 國際學院 (石門校園)
6. 護理實習室 (九龍塘校園)
7. 圖書館 (石門校園)
8. 學習共享空間 (石門校園)
9. 動態影像室及廣播製作室 (石門校園)

Programmes offered by SCE are conducted at various teaching venues, including Kowloon Tong and Shek Mun (Shatin) Campuses and accessible Learning Centres in business districts. While most of the classes are held at the twin campuses, depending on the School's development, students may be assigned to take classes at other venues during their study period.

持續教育學院的課程在多個教學地點進行，包括九龍塘和石門(沙田)校園，以及位於市區的教學中心。大部分課程均在九龍塘或石門校園進行，但本院亦會按學院的發展和實際需要，安排學生在其他教學地點上課。

"I have learnt a lot at SCE, not only professionalism but also wisdom of life. Our teachers have always enlightened us with passion, encouraged us with patience and enriched us with wisdom. They have become the indispensable pillars and an integral part of our lives. I am grateful to the School and our teachers for nurturing us into enthusiastic early childhood educators who are committed to building a brighter future for our next generation."



KAN Cheuk Ying

- Bachelor of Education (Honours) in Early Childhood Education, HKBU 2022
- Kindergarten Teacher

「在學院學到的專業知識及人生智慧讓我獲益良多。老師熱心教學，誨人不倦，以智慧啟發智慧，更成為了我們人生中不可或缺的支柱。衷心感謝學院和老師的栽培，使我們能成為滿有熱忱的幼兒教育工作者，培育下一代成就美好的未來。」

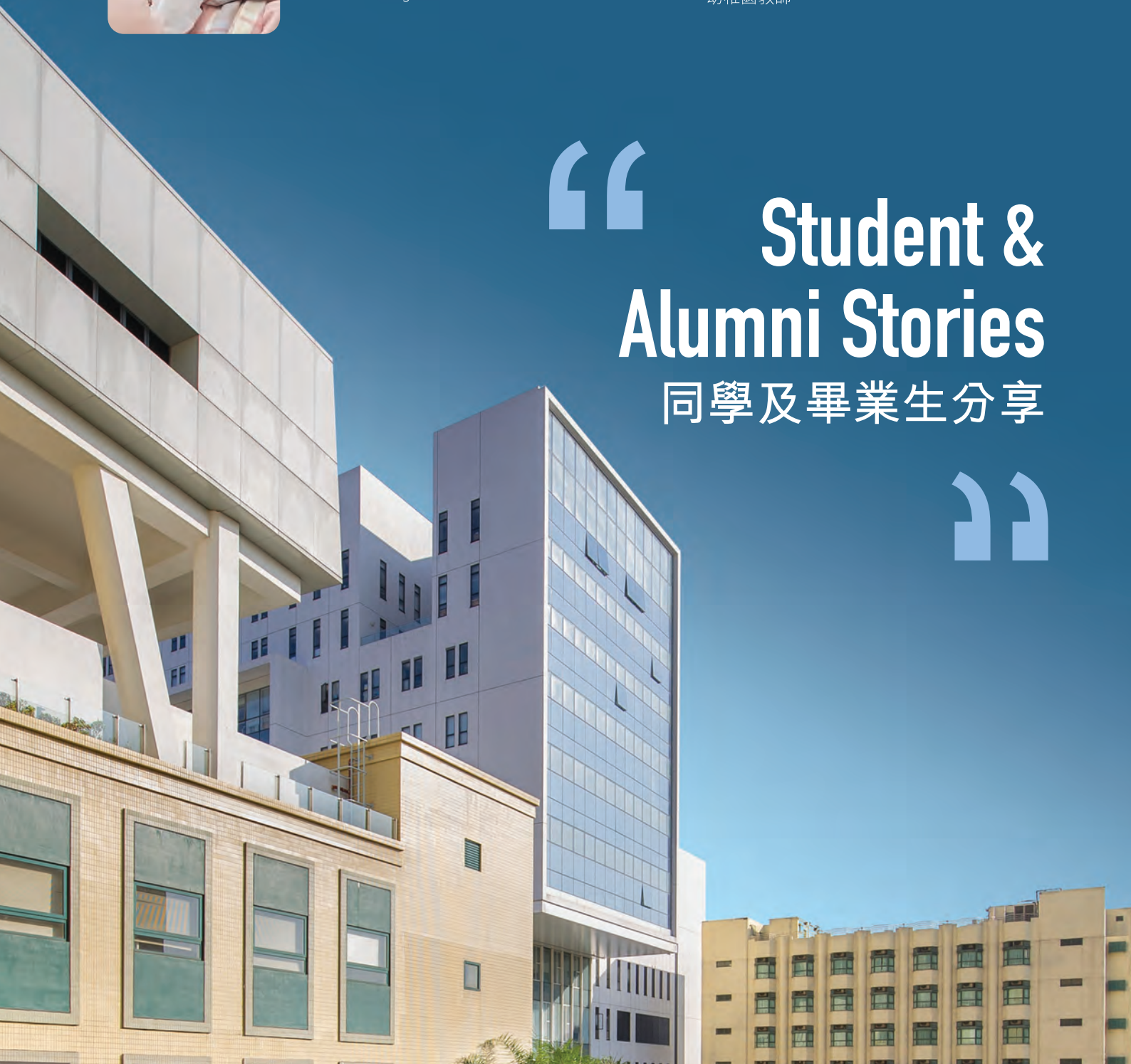
簡卓盈

- 2022年香港浸會大學幼兒教育學教育學士(榮譽)學位課程畢業
- 幼稚園教師



Student & Alumni Stories

同學及畢業生分享



"The Division of Nursing Education has played a vital role in our development as future nurses. All the faculty in the Division have consistently demonstrated their expertise, compassion and commitment to our success. Their tireless efforts in providing us with a comprehensive and enriching education are truly inspiring.

BU is renowned for offering students a supportive and vibrant environment in which to thrive. The University's commitment to academic excellence, innovation and community engagement has created a platform for us to explore our passions, broaden our horizons and make a positive impact on society."

HUI Tsz Yin, Gigi

- Bachelor of Nursing (Honours), HKBU 2024
- Registered Nurse

許梓妍

- 2024年香港浸會大學護理學學士（榮譽）學位課程畢業
- 註冊護士



「護理教育部在培育護理人才方面扮演著重要的角色。學部內的所有教學人員除致力傳授專業的護理知識外，亦充滿同理心，讓我們走向成功之路。老師一直努力不懈，為我們提供全面而豐盛的教育，實在令人鼓舞。

浸大著重為學生提供全面的支援服務，亦為同學營造多姿多彩的校園生活。大學在學術、創新領域以至社區聯繫方面均表現卓越，正打造出良好的平台，讓我們不斷探索和拓展視野，為社會作出貢獻。」

"Associate of Arts (Cultural Studies) introduced me to post-structuralism and deconstruction, fostered my interest in the new trends in contemporary thought, and gradually got me on the road to philosophy. After completing my master's degree, I went on to further explore philosophy in academia, like cosmopolitanism and transhumanism, in France. Every step of the journey has contributed to who I am today."

LAW Ching Lam, Janice

- Associate of Arts (Cultural Studies), HKBU 2015
- Bachelor of Arts in Philosophy, CUHK 2018
- Master of Philosophy, CUHK 2020
- Master Erasmus Mundus Europhilosophie, University of Toulouse-Jean Jaurès, France and Université Catholique de Louvain, Belgium 2023
- University Lecturer

羅靜琳

- 2015年香港浸會大學文學副學士（文化研究）畢業
- 2018年香港中文大學哲學文學士畢業
- 2020年香港中文大學哲學碩士畢業
- 2023年法國土魯斯第二大學及比利時魯汶天主教大學歐洲哲學碩士畢業
- 大學講師



「修讀文化研究副學士讓我認識到後結構主義和解構主義，開啟了我對當代新思潮的興趣，驅使我朝哲學方向發展。完成哲學碩士學位之後，我更遠赴法國，進一步探索如世界主義和超人類主義等學界新思潮。正是這些一步一腳印的經歷，成就了今天的我。」

"The most valuable aspect of the programme is the wide range of learning opportunities for us to visit leading corporations and connect with industry practitioners. The lecturers were also very generous in sharing their insights and expertise, which greatly enriched my knowledge and overall learning experience."

CHAN Yat Ching

- Higher Diploma in Data Science, HKBU 2024
- Currently studying Bachelor of Science in Information Management, HKU

陳逸政

- 2024年香港浸會大學數據科學高級文憑畢業
- 現修讀香港大學理學士（資訊管理）



「這個課程提供了豐富的機會，讓我們參觀知名企業，並與業界從業員建立聯繫。各講師也樂於指導同學以及分享經驗，大大提升了我對課程的理解，豐富了我整體的學習體驗。」

